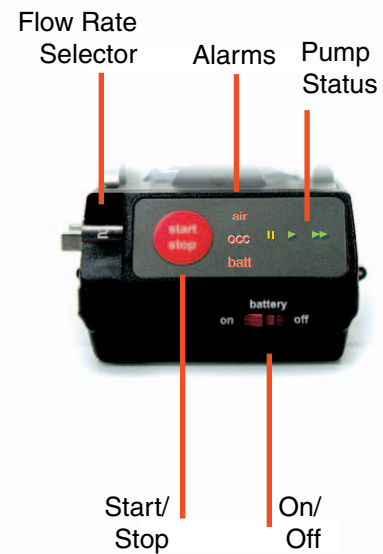


POWER INFUSER[®] Quick Start Guide

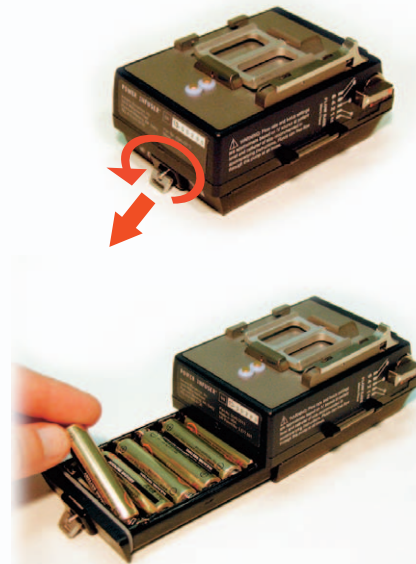
1 Remove Contents



2 Pump Controls



3 Install AAA Batteries



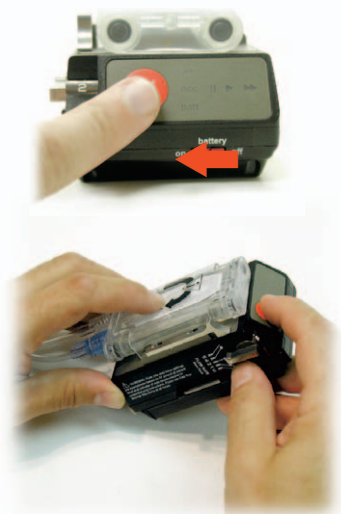
4 Make Connections To Cartridge



5 Install Cartridge

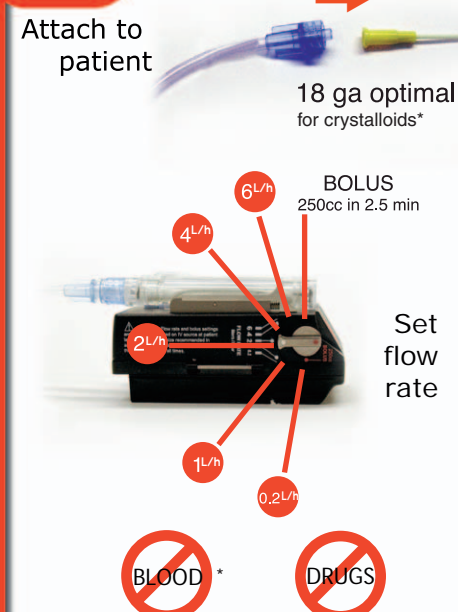


6 Turn On Prime/Eliminate Air



Note: Tilt unit, tap cartridge to remove air.

7 Infuse IV Fluids

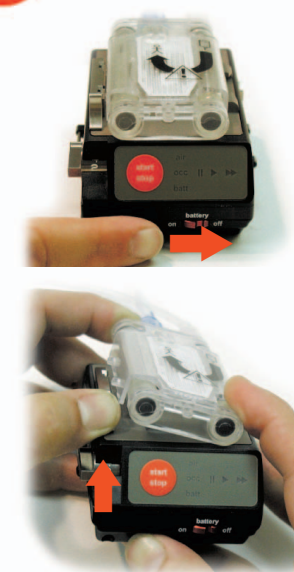


8 Exchange IV Bag

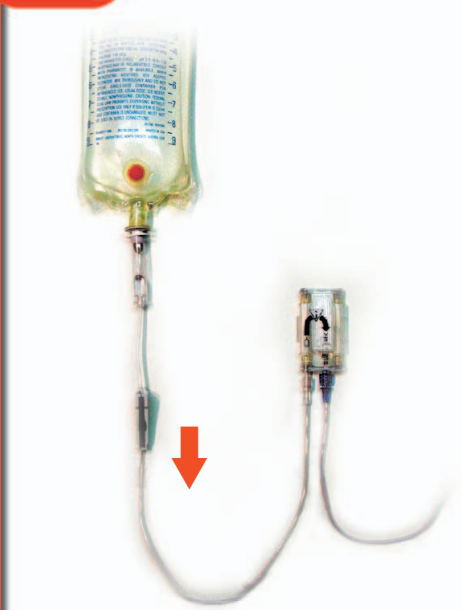


Note: Clamp IV set prior to exchange.

9 End Infusion



10 Free Flow if Desired



② Cartridge is single-use disposable.