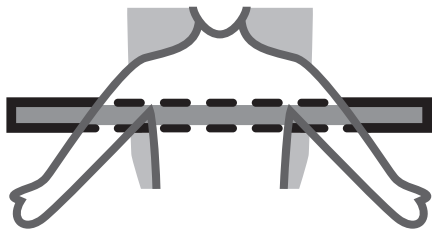
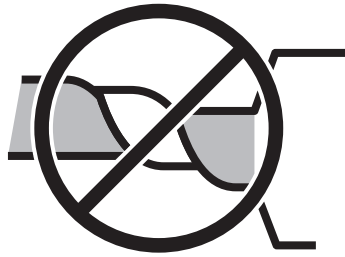


# For Adult (≥18 years) Non-Traumatic Cardiac Arrest

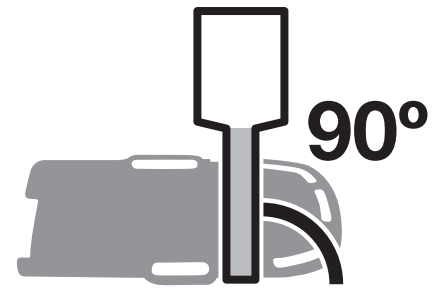
## Maximum Patient Weight 300 lbs.



- Remove ALL clothing from torso (both front and back) to ensure skin-to-platform contact
- Align armpits onto yellow line on Platform



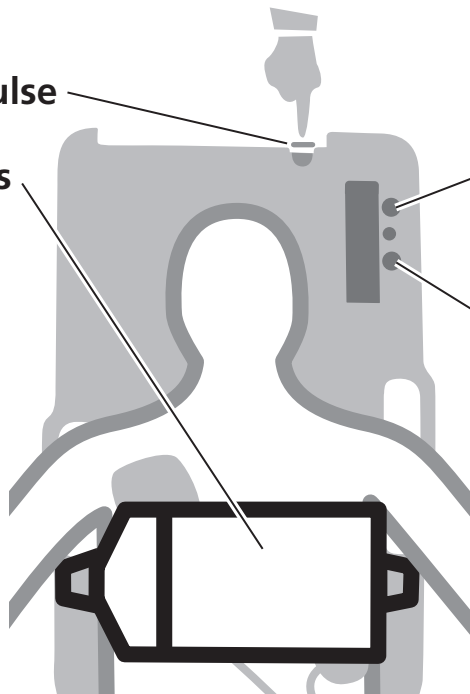
Do not twist the chest bands



Maintain chest bands at 90 degrees to Platform and free of obstructions

1. Power up AutoPulse

2. Close chest bands



3. Press CONTINUE (green button)

4. Press START (green button) to begin compressions

To pause or stop operation press STOP (orange button)

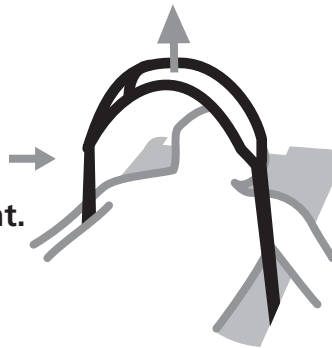
Follow all local protocols and procedures.

Review User Guides and complete in-service training.

## Troubleshooting

### For Fault/User Advisory

- **Lift up and fully extend both chest bands.**
- Check both lateral and vertical patient alignment.
- Verify that chest bands are not twisted, are 90 degrees to the Platform and are free of obstructions.
- **Press RESTART** (green button) and follow on-screen instructions to begin compressions.

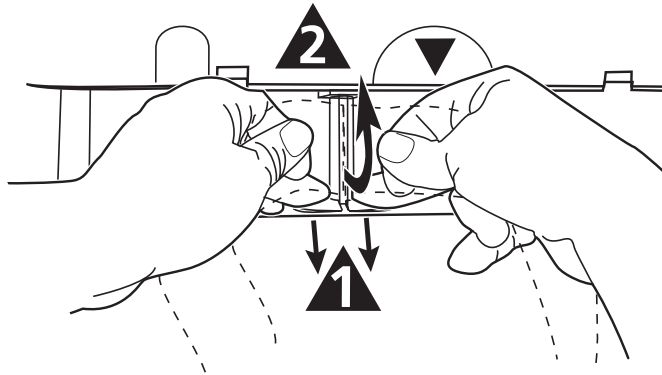


If you cannot rectify problem immediately open chest bands and revert to manual CPR.

# LifeBand® Load-distributing Band

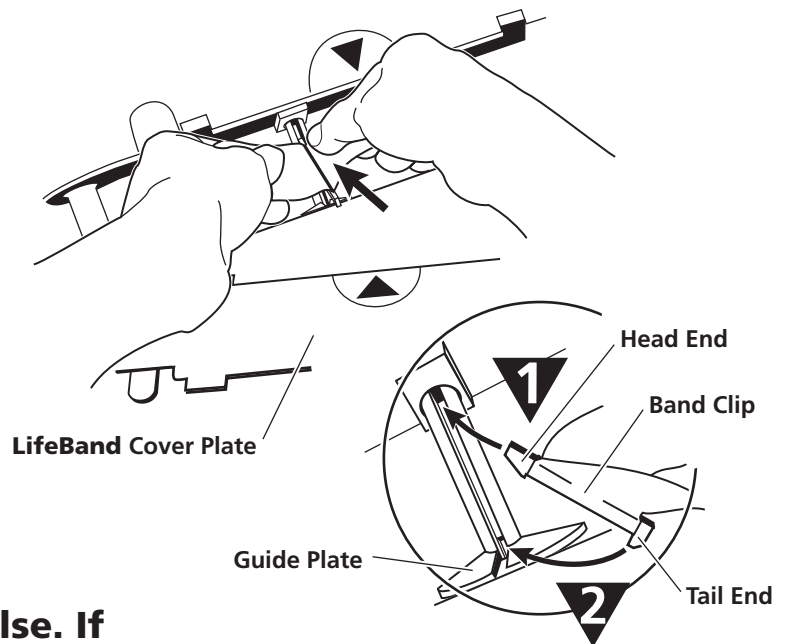
## Removing LifeBand

- Place AutoPulse face down.
- Lift hinged skirts, pinch 4 locking tabs and remove Cover Plate.
- Grasp the Band with the thumb and index finger of both hands. **▲1** Push in the Guide Plate, using both middle fingers and, **▲2** pull up the Band to remove the clip from the shaft.



## Installing new LifeBand

- Match arrow on the Cover Plate with arrow on Platform.
- **▼1** Insert Head end of Band Clip into slot. **▼2** Press Tail end of Band Clip into Guide Plate slot and feel for "click." Rotate shaft in either direction to verify Band Clip is seated in slot. Ensure that Band is not twisted.
- Snap Cover Plate in place and flip down hinged skirts.
- **Important: power on AutoPulse. If a Fault/User Advisory is displayed, check installation of the Band Clip into the Drive Shaft slot.**




← AutoPulse deployment on other side

**ZOLL®**

AutoPulse is a trademark of ZOLL Circulation  
ZOLL Circulation ©2009 Printed in U.S.A.

P/N 10596-001 Rev. 10

Inquiries to:

 ZOLL Circulation  
650 Almanor Avenue  
Sunnyvale, CA 94085 U.S.A.  
t: +1.800.321.4CPR (4277)  
t: +1.408.541.2140  
f: +1.408.541.1030

**EC REP**

EU Authorized Representative  
ZOLL International Holding B.V.  
Newtonweg 18  
6662 PV ELST  
The Netherlands  
t: +31 481 366410

**CE**  
0344