

AEDtrax

Features and technical specifications



Save time and money with AEDtrax, a comprehensive and independent monitoring solution for the ZOLL AED 3® defibrillator. AEDtrax automatically notifies you when any action is required to keep your ZOLL AED 3 ready for use, enabling you to focus on your essential work.

Features

24-7 monitoring of your ZOLL AED 3

- Battery status (expiration and % life remaining)
- Electrode status and expiration
- AED readiness

Location tracking*

- Assign RFIDs to storage locations to track where your ZOLL AED 3 is
- RFID will detect device deployment and AEDtrax will provide deployment and movement notifications

Environmental monitoring*

- Monitors temperature, humidity, and air pressure

GPS localization*

- When an AEDtrax is deployed, receive GPS location when available

Email notifications

- Receive an email when AED is used or if action is required

Secure and transparent

- Data is hosted by ZOLL® Online to maximum security standards

Case data transmission

- AEDtrax automatically transmits clinical event information

Compatible with new and existing devices

- AEDtrax can be easily retrofitted to an existing ZOLL AED 3, with or without a carrying case

ZOLL®



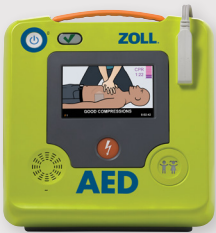
24/7 Readiness Monitoring

AEDtrax monitors device readiness and will alert the program manager should a device need attention



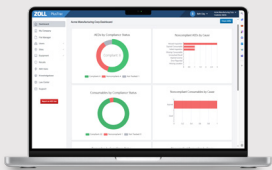
Case Data Transmission

AEDtrax transmits clinical event information from the ZOLL AED 3 device



Compatible with New and Existing Devices

AEDtrax can be easily used with any existing ZOLL AED 3 device



Fully Integrated with PlusTrac™

AED Program Management System

Technical specifications

Dimensions

210 x 110 x 25 mm
(8.27 x 4.33 x 0.98 in.)

Weight

550 g
(1.21 lb.)

Communication technologies

- LTE
- Bluetooth
- RFID
- GPS

Energy supply

- Lithium battery Li-SOCI2
- 13.5 Ah capacity
- Approx. 5-year service life

USB connection

USB-C
(ZOLL AED 3: USB 2.0)

Operating temperature range

-20°C to +60°C
(-4°F to +140°F)

Sensors

- 3-axis acceleration sensor
- Atmospheric temperature, pressure, and humidity sensor

Regional carriers supported

Global: Vodafone*

Europe:

Deutsche Telekom*

North America:

AT&T/ Verizon*/

T-Mobile*/Sprint*

China:

China Telecom*/China

Mobile*/China Unicom*

South Korea:

SKT*

Japan:

NTT DOCOMO*/

SoftBank*/KDDI*

Australia:

Telstra*

Global cellular approvals

Global: GCF

Europe: CE

North America:

FCC/PTCRB

Canada: IC

Australia: RCM

*Features available following initial release
Made in Switzerland and distributed by ZOLL

ZOLL Medical Corporation

269 Mill Road | Chelmsford, MA 01824 | 978-421-9655 | 800-804-4356 | zoll.com

Specifications subject to change without notice.

Copyright © 2025 ZOLL Medical Corporation. All rights reserved. PlusTrac, ZOLL AED 3 and ZOLL are trademarks or registered trademarks of ZOLL Medical Corporation in the United States and/or other countries. All other trademarks are the property of their respective owners. Printed in U.S.A. MCN IP 2502 1000

ZOLL®

For subsidiary addresses and other global locations, please go to www.zoll.com/contacts.