

# Pedi-padz® Solid Gel Multi-function

## Instructions for Use

OPERATING TEMPERATURE: 0° C to 50° C (32° F to 122° F)  
SHORT TERM STORAGE TEMPERATURE: -30° C to 65° C (-22° F to 149° F)  
LONG TERM STORAGE TEMPERATURE: 0° C to 35° C (32° F to 95° F)



### INDICATIONS FOR USE

R2078-01 Rev. C

*Defibrillation Noninvasive Pacing Cardioversion ECG monitoring*

For use on pediatric patients with ZOLL® R Series® and X Series® by trained personnel including Physicians, Nurses, Paramedics, Emergency Medical Technicians and Cardiovascular Laboratory Technicians. The Pedi-padz electrodes are indicated for use on pediatric patients less than 8 years of age or weighing less than 55lbs (25kg). For patients over 25kg, adult electrodes are recommended.

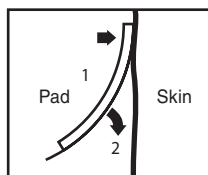
### Preconnecting the Electrodes

1. Do not open until ready to use.
2. Periodically inspect electrode packaging for integrity & expiration date.
3. Attach to connector of a ZOLL Multi-Function Cable.

### SKIN PREPARATION

Ensure skin is clean and dry. Remove any debris, ointments, etc. with water (and mild soap if needed). Wipe off excess moisture/diaphoresis with dry cloth.

### ELECTRODE APPLICATION



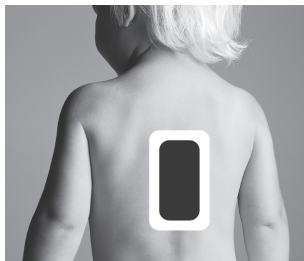
1. Apply one edge of the pad securely to the patient.
2. "Roll" the pad smoothly from that edge to the other. Be careful not to trap any pockets of air between the gel and skin.
3. Connect electrodes to machine cable.
4. Connect ECG leads for demand pacing.

⚠ Poor adherence and/or air under the electrodes can lead to the possibility of arcing and skin burns.

### ELECTRODE PLACEMENT (Anterior-Posterior)

Recommended for defibrillation, noninvasive pacing, cardioversion, and ECG monitoring of pediatric patients.

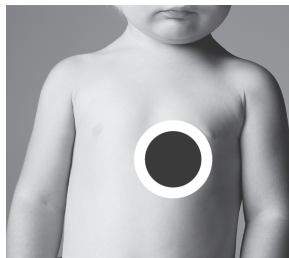
#### BACK



Grasp the Back/Sternum electrode at the bottom and peel from the plastic liner. Apply electrode centered along spine of patient.

⚠ Always apply back electrode first. If front electrode is already in place when patient is being maneuvered for placement of the back, the front may become partially lifted. This could lead to arcing and skin burns.

#### FRONT



Grasp the Apex/Front electrode at the bottom and peel from the plastic liner. Apply over cardiac apex with the nipple under adhesive area.

⚠ Avoid any contact between nipple and gel treatment area. Skin of the nipple area is more susceptible to burning.

### ⚠ WARNINGS

1. Do not use if gel is dry. Dried out gel can lead to skin burning. Do not open pouch until ready to use. Do not use electrodes past the expiration date printed on the pouch label.
2. Do not fold electrodes or packaging. Any fold in or other damage to the conductive element could lead to the possibility of arcing and/or skin burns.
3. After patient movement due to muscle contraction or patient repositioning, press pads to skin to ensure good coupling between pads and skin.
4. Continuous pacing of patients could cause burns. Periodic inspection of the underlying skin, at least every 30 minutes during pacing, is strongly advised.
5. Electrodes should be replaced after 24 hours of use or 1 hour of pacing.
6. These electrodes are recommended for patients less than 8 years of age or weighing less than 55lbs (25kg). For patients over 25kg, adult electrodes are recommended. Do not delay therapy to determine actual weight of patient during emergency.
7. Avoid electrode placement near the generator of an internal pacemaker, other electrodes or metal parts in contact with the patient.
8. Some current generated by electrosurgical units (ESU) may concentrate in the conductive gel of pacing / defibrillation electrodes, especially if an ESU grounding pad other than that recommended by the ESU manufacturer is used. Consult the ESU operator's manual for further details.
9. To avoid electrical shock, do not touch the pads, patient, or bed when defibrillating.
10. Do not discharge standard paddles on or through electrodes or place separate ECG leads under pads. Doing so could lead to arcing and/or skin burning.
11. Device disposal shall follow hospital protocol.
12. Use only with ZOLL pacemaker/defibrillator products.

# ZOLL®



ZOLL Medical Corporation  
269 Mill Road  
Chelmsford, MA 01824-4105 USA  
800-348-9011 Made in USA



ZOLL International Holding B.V.  
Newtonweg 18 6662 PV ELST  
The Netherlands Tel. +31 (0) 481 366410