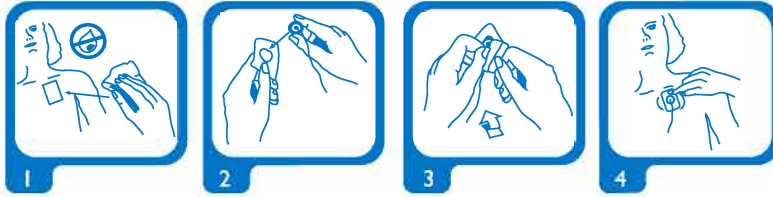


TEAR TO OPEN

ECG Electrodes  
Ag/AgCl Pregelled Monitoring Electrodes

Contains  
**30**

Z9526-93 Rev. E



Cautions:

- Do not use if gel is dry.
- Replacement of electrodes after each 24 hour period is suggested. Vary placement to minimize skin sensitivity.

**ZOLL.**

ZOLL Medical Corporation  
269 Mill Road  
Chelmsford, MA 01824-4105 USA  
800.348.9311 Made in USA

EC REP ZOLL International Holding B.V.  
Nieuwtonweg 18 6662 PV ELST  
The Netherlands Tel. +31 (0) 481 366410

