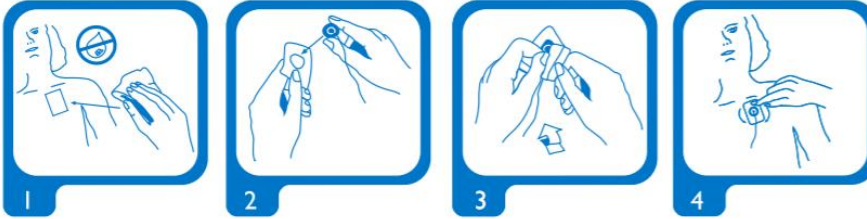


TEAR TO OPEN

ECG Electrodes
Ag/AgCl Pregelled Monitoring Electrodes

Contains
30

AW-R2246-02 Rev. A



Cautions:

- Do not use if gel is dry.
- Replacement of electrodes after each 24 hour period is suggested. Vary placement to minimize skin sensitivity.

ZOLL

ZOLL Medical Corporation
269 Mill Road
Chatham, MA 01824-1105 USA
800-348-9011 Made in USA

EC REP ZOLL International Holding B.V.
Newtonweg 18 6662 PV ELST
The Netherlands Tel. +31 (0) 481 366410

