

# ZOLL AED 3™

## TRAINER



## CPR Uni-padz™ Trainer Electrode Attachment Guide



**ZOLL Medical Corporation**  
269 Mill Road  
Chelmsford, MA USA  
01824-4105

Attn: Technical Service Department

Tel: 978-421-9655      800-348-9011  
Fax: 978-421-0001



**ZOLL International Holding B.V.**  
Newtonweg 18  
6662 PV ELST  
The Netherlands

Tel: +31 (0) 481 366410  
Fax: +31 (0) 481 366411

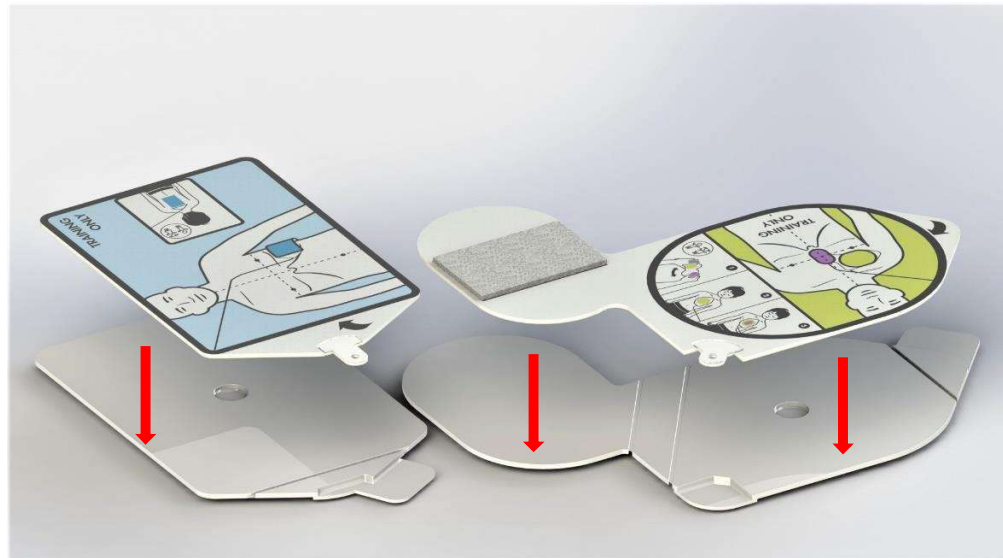
International Service: Contact your local distributor.

© 2018 ZOLL Medical Corporation  
TRAINING USE ONLY – NOT FOR CLINICAL USE

(1)



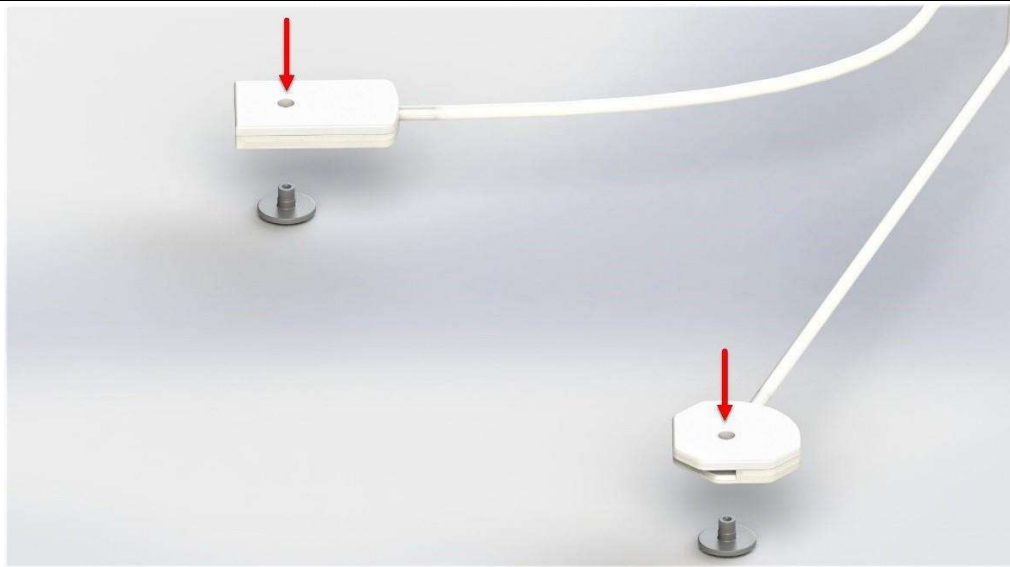
(2)



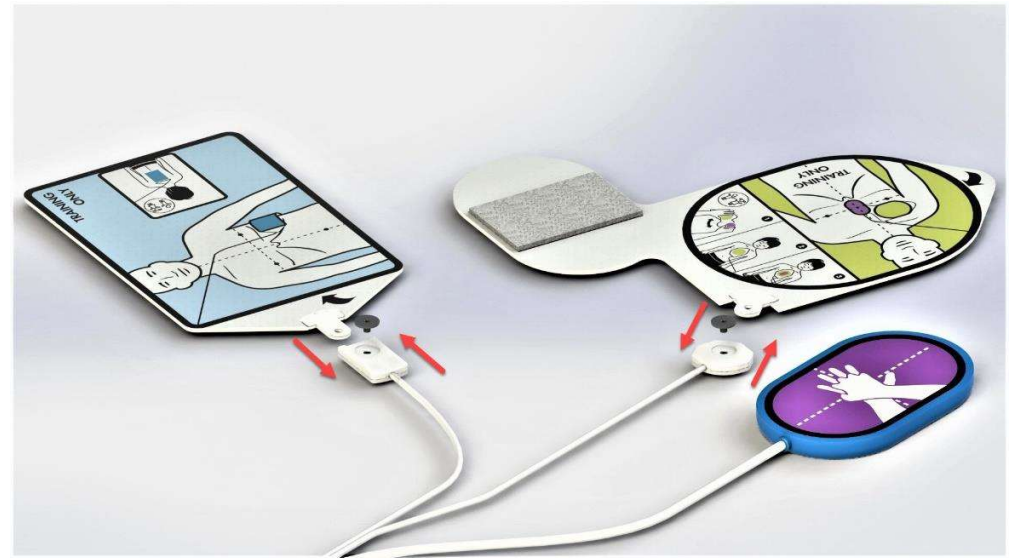
(3)



(4)



(5)



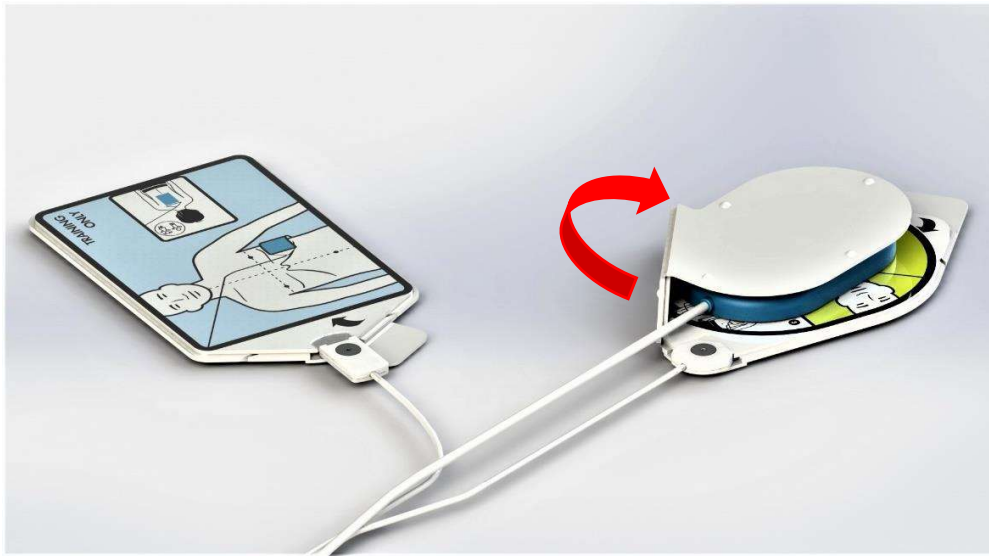
(6)



(7)



(8)



(9)



(10)

