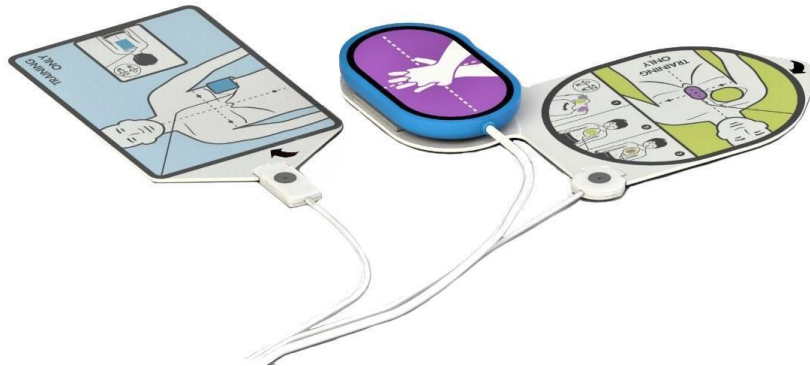


ZOLL AED 3™

TRAINER



CPR Uni-padz™ Trainer Electrode Attachment Guide



ZOLL Medical Corporation
269 Mill Road
Chelmsford, MA USA
01824-4105

Attn: Technical Service Department

Tel: 978-421-9655 800-348-9011
Fax: 978-421-0001



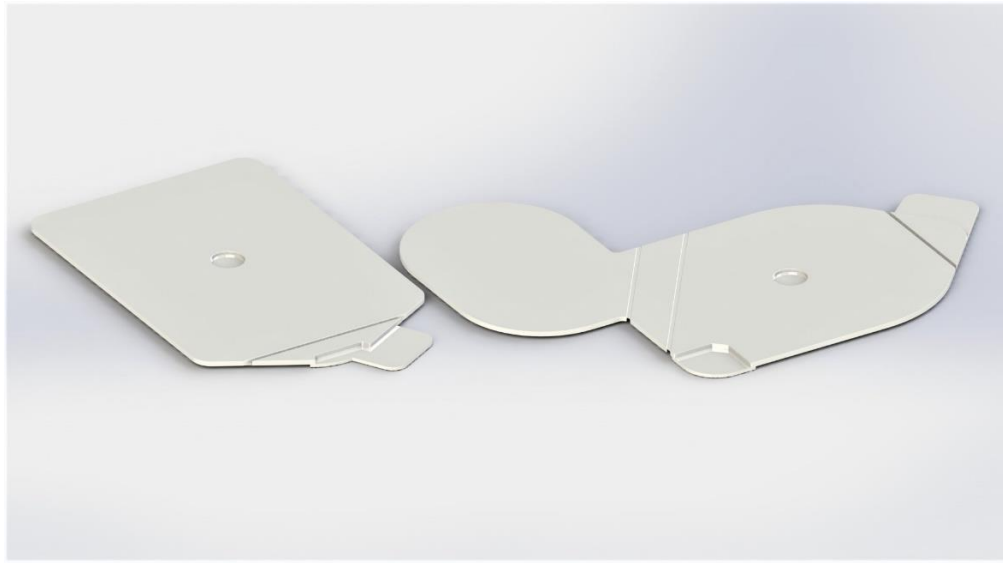
ZOLL International Holding B.V.
Newtonweg 18
6662 PV ELST
The Netherlands

Tel: +31 (0) 481 366410
Fax: +31 (0) 481 366411

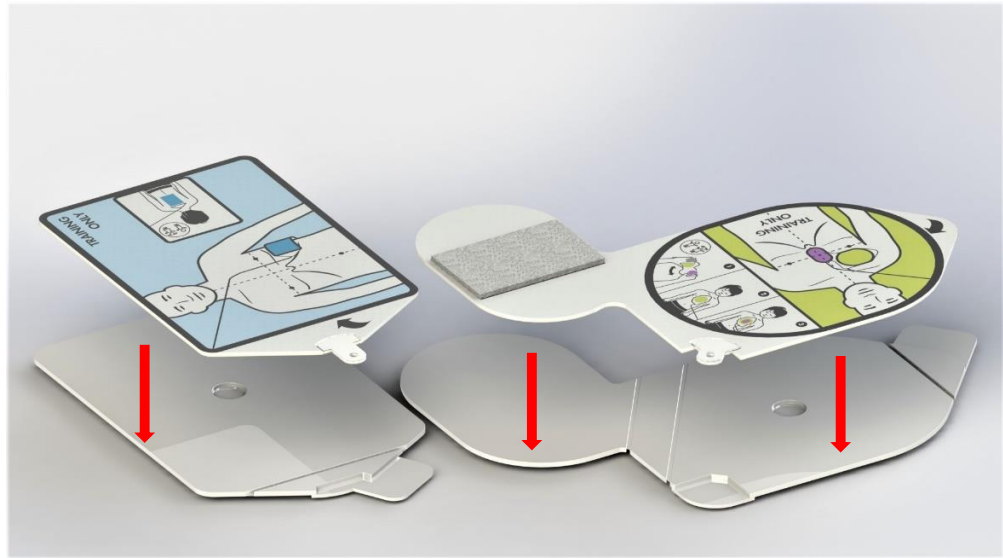
International Service: Contact your local distributor.

© 2018 ZOLL Medical Corporation
TRAINING USE ONLY – NOT FOR CLINICAL USE

(1)



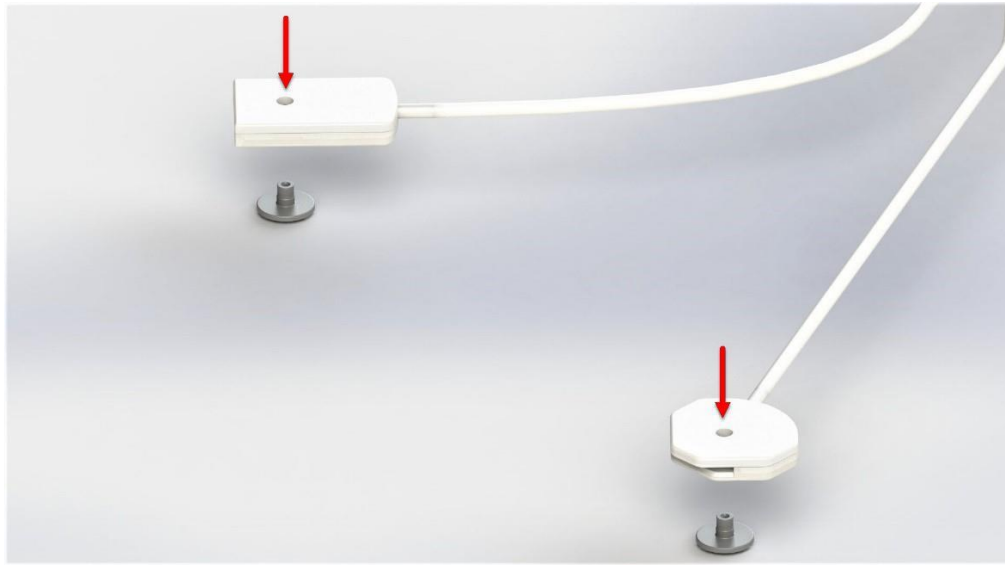
(2)



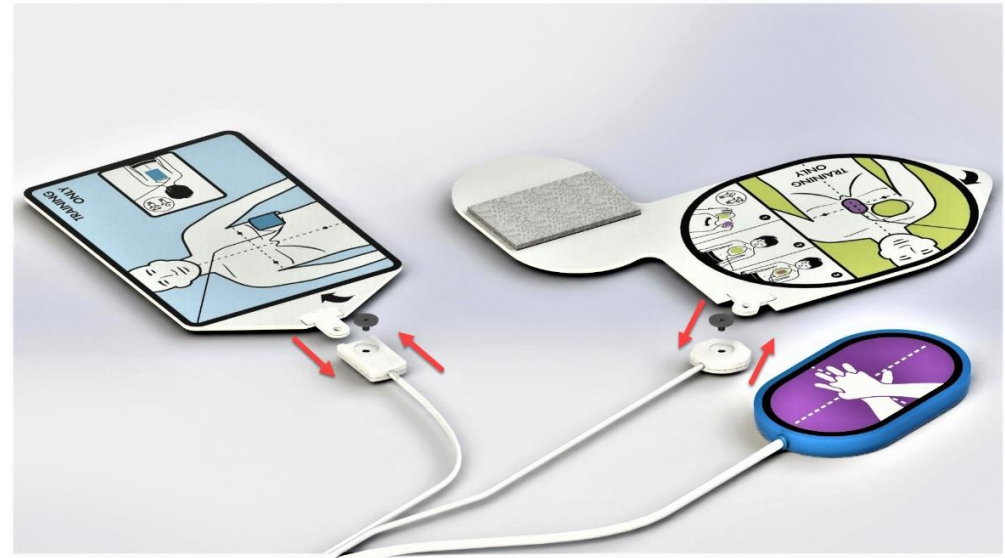
(3)



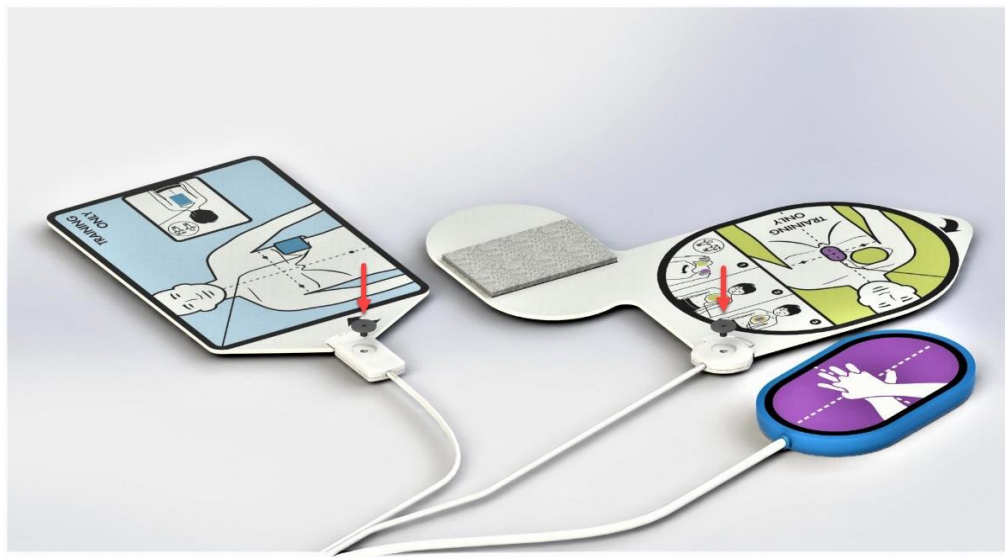
(4)



(5)



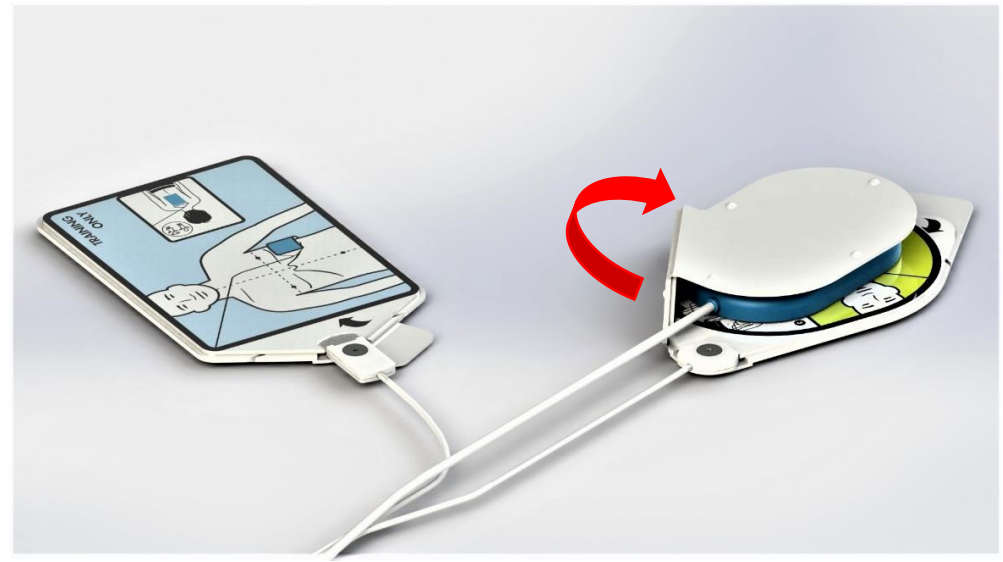
(6)



(7)



(8)



(9)



(10)

